

HGP Open Part Number	Schematic Drawing #	Approx Weight (LBS)
HGP0040CW0S0000	29474	126
HGP0040CW0C0000	29474-1	130
HGP0040CW0S1000	29474-PQ1	129
HGP0040CW0C1000	29474-PQ	133

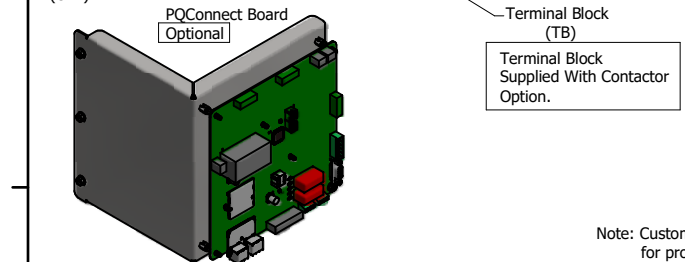
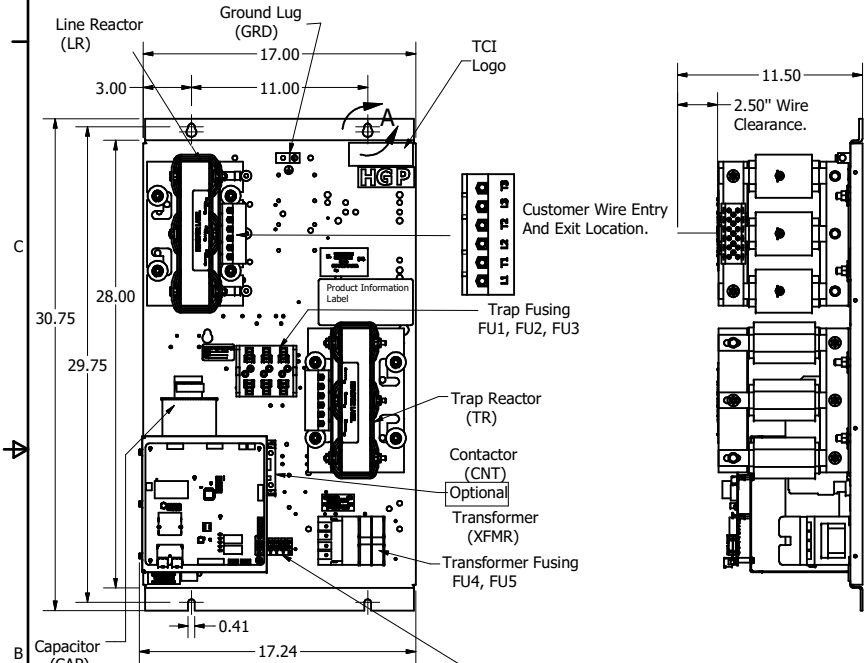
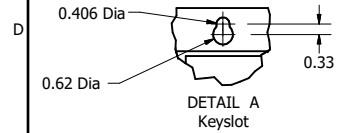
HGP Part Number	HorsePower (HP)	kVar	Harmonic	Voltage (V)	Hz.	Phase
HGP0040CW----	40	15	5th	600	60	3

HGP Enclosed Type 1 Part Number	Schematic Drawing #	Approx Weight (LBS)
HGP0040CW1S0000	29474	190
HGP0040CW1C0000	29474-1	194
HGP0040CW1S1000	29474-PQ1	193
HGP0040CW1C1000	29474-PQ	197

Note: For Torque Information  
See IOM Manual

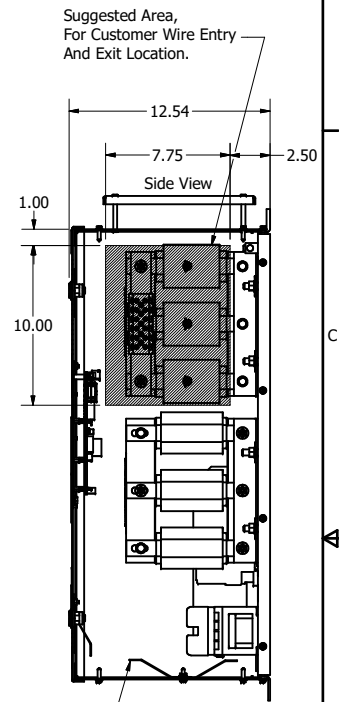
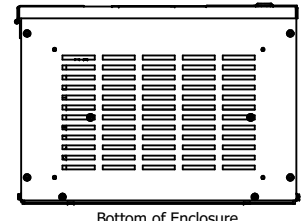
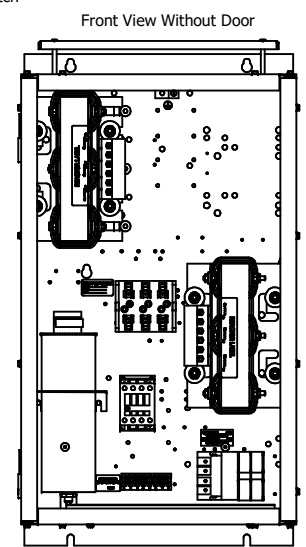
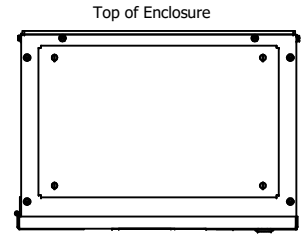
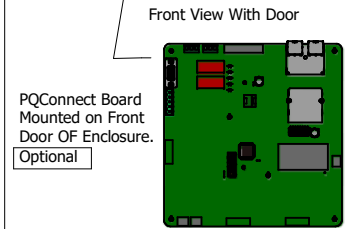
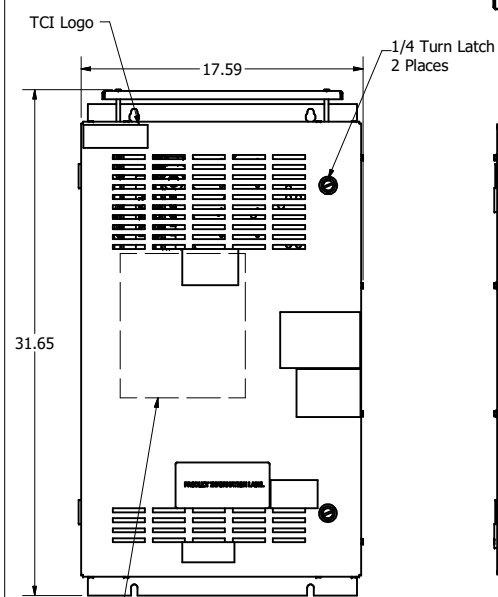
Customer Connections.  
L1, T1, L2, T2, L3, T3  
Wire Range: 1 AWG to 22 AWG.

Ground Lug  
Wire Range: 1/0 to 14 AWG.



Note: Customer is responsible for proper cooling of filter components on open panels. Capacitors Maximum Ambient 50°C.

HGP0040CW----				
Components	0S0000/1S0000	0C0000/1C0000	0S1000/1S1000	0C1000/1C1000
Line Reactor (LR)	X	X	X	X
Trap Reactor (TR)	X	X	X	X
Capacitor (Cap)	X	X	X	X
Trap Fusing, FU1, FU2, FU3	X	X	X	X
Contactor (CNT)		X		X
Transformer (XFMR)	X	X	X	X
XFMR Fusing, FU4, FU5	X	X	X	X
PQConnect Board			X	X



UL Required Shields  
3 Places.

Customer Is Responsible For Installation to Meet All National And Local Electrical Codes.

Material(s) Shall be RoHS Compliant

TCI, LLC CLAIMS PROPRIETARY RIGHTS IN THE MATERIAL HEREIN DISCLOSED. IT IS SUPPLIED WITHOUT PREJUDICE TO ANY PATENT RIGHTS OF TCI AND MAY NOT BE REPRODUCED OR USED TO MANUFACTURE ANYTHING SHOWN THEREIN WITHOUT WRITTEN PERMISSION FROM TCI.	REVISED	DATE	BY	SCALE	DRN BY	DATE	FIG
	NO	REVISION	DATE	BY	SCALE	DRN BY	DATE
TOLERANCES (EXCEPT AS NOTED)				W132 N10611 Grant Drive Germantown, WI 53022			
DECIMAL				.XX ± .25 .XXX ± .10			
FRACTIONAL				± 1/16			
ANGULAR				± 1°			
HGP, 40HP, 600/3/60, Open and Type 1.				105893DG			
SCALE: 1/8				FIG: C			

A

A

4

1

3

4

2

1

1

SHT 1 OF 1